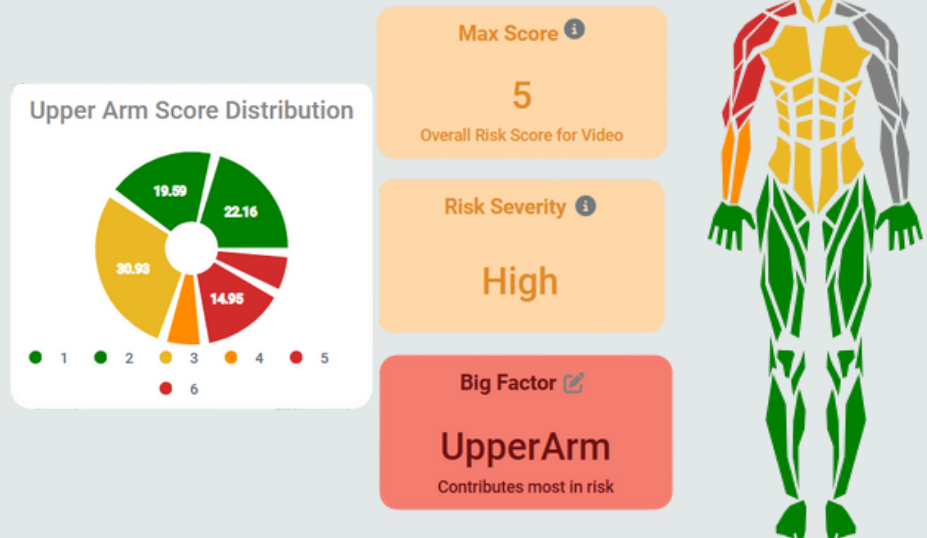


AI-Powered Ergonomic Insights in Minutes

No sensors. No disruption. Just video and results.

Upload a short video of a worker completing a task—
ErgoEdge AI instantly analyzes posture, movement, and task demands to deliver a full-body ergonomic risk report.

- ✓ Fast
- ✓ Visual
- ✓ Accurate
- ✓ Sensor-free



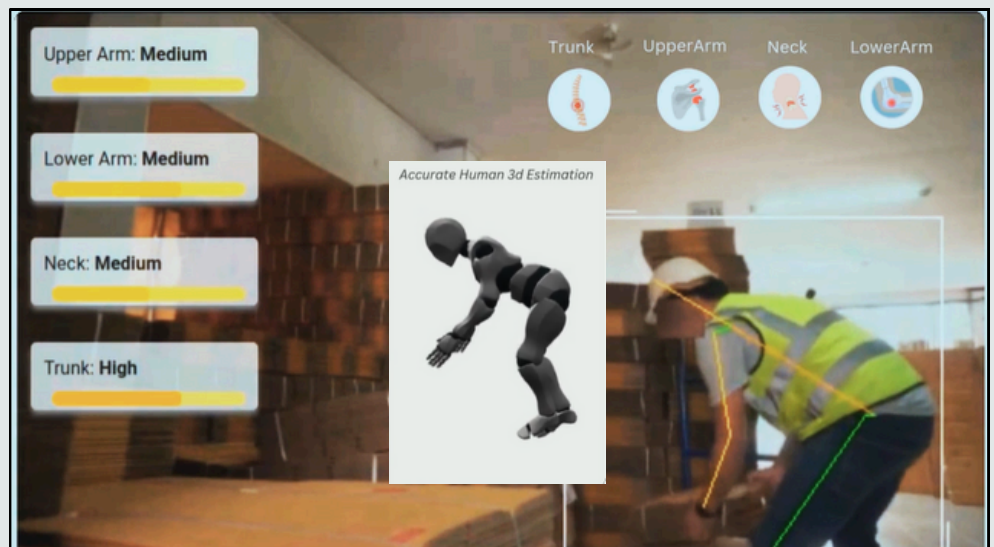
ErgoEdge provides visual summaries of movement patterns, highlighting both safe and high-risk actions, automatically synced with your uploaded video, which gives your safety team the clarity to spot emerging issues and confidently implement targeted improvements.

Built for real-world workplaces

ErgoEdge is engineered to work in industrial environments with:

- Variable lighting
- Constant motion
- Complex workflows

Utilize webcam footage.
No sensors needed!



How it works — Just 3 steps

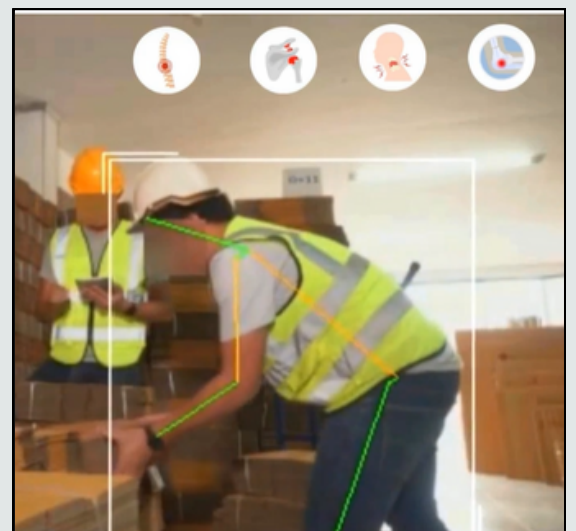
- 1** Record
Capture a 1–2 minute video using any smartphone, tablet, or webcam.
- 2** Upload
Submit via our secure mobile or web app.
- 3** Analyze
One click processes the video. Your ergonomic report is ready in minutes.



Analysis includes 3-D simulation, risk severity, body part at highest risk, comparisons to baseline, and recommendations to further reduce MSD risk

Why safety teams choose ErgoEdge

- Highlights both safe and risky movements
- Syncs key risks to actual video moments
- Helps prioritize actions with confidence
- Requires no training or special setup



Ready to see it in action?



Learn more at www.longitude6.com or scan our QR code to request a demo